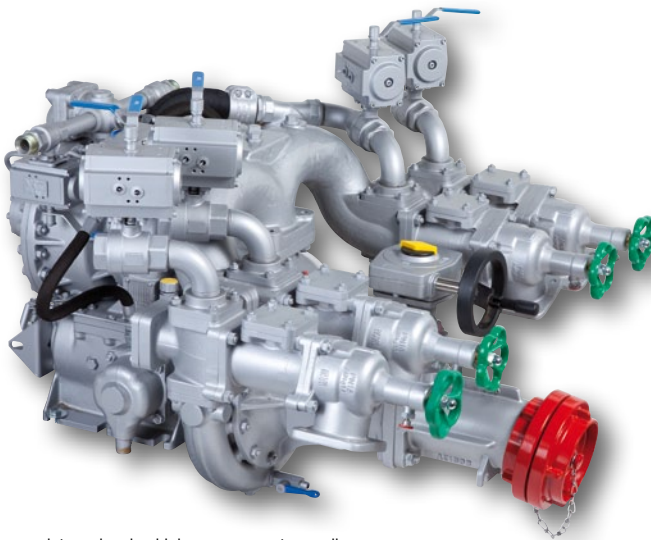
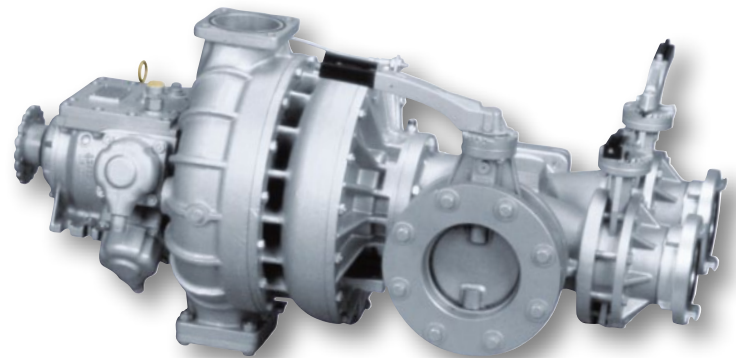




FPN 3000 (10-3000/15-3000)



picture showing high pressure part as well



FPN 15-3000-2

Pump type	Art no.	Rpm max.	Power input max.	Pump output max. at 10 bar Hs 3,0 m	Weight	Dimensions
		min <sup>-1</sup>	kW (HP)	l/min	approx. kg	approx. LxWxH mm
FPN 10-3000-1HL	022096	4450	125 (170)	3800	90	1010x920x850
FPN 10-3000-1HR	022097					
FPN 10-3000-2HL	022116	3250	102 (139)	3200	115	
FPN 10-3000-2HR	022117					
FPN 15-3000-1HL	022100	4700	150 (204)	3700	90	
FPN 15-3000-1HR	022101					
FPN 15-3000-2HL	022130	2700	170 (232)	4600	97 (basic pump)	basic pump 750x500x650
FPN 15-3000-2HR	022131					

**Basic equipment:**

1stage or 2stage centrifugal fire pump in clockwise or anti-clockwise rotational direction,  
suction inlet DN 125 (FPN 15-3000-2 → flange dia. 240 mm),  
3 delivery outlets size B (FPN 15-3000-2 → flange dia. 150 mm).  
Except for FPN 15-3000-2 each 1 connection for rapid intervention line and tank filling line, 1 connection for tank suction line, lockable by butterfly valve.  
For all types: priming system fully automatic TROKOMAT PLUS

**Gauges and controls:**

modular pump control system “Z-Control”  
(sub chapter “Z-Control”)

**Paintwork:**

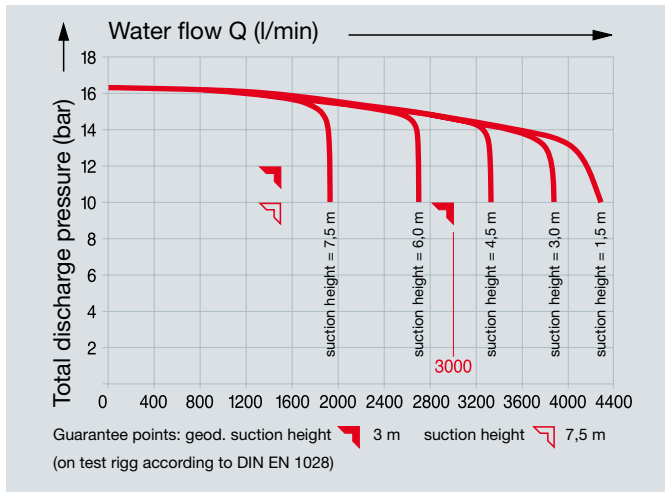
silver coloured RAL 9006

**Drive:**

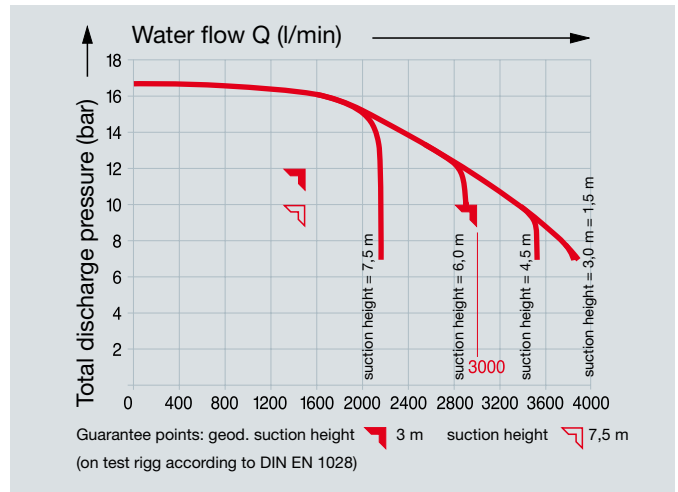
via joint shaft from p.t.o. of the vehicle gearbox

The pumps are also available in bronze. Minimum purchase is required. All FPN can be supplied/retrofitted with high pressure part (pls. see extra pages 92/93).

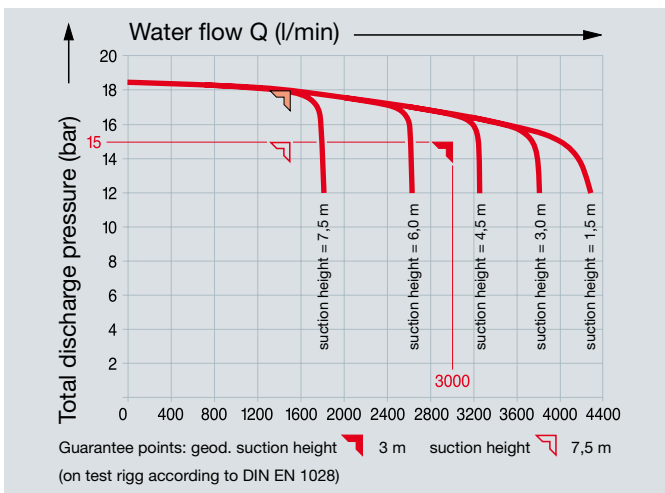
**FPN 3000 (10-3000/15-3000)**



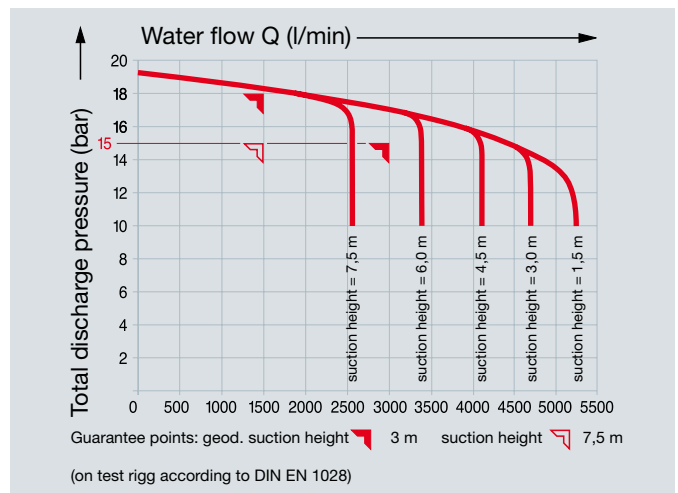
**FPN 10-3000-1**, test number: AZ 103010403



**FPN 10-3000-2**, test number: AZ 103020403



**FPN 15-3000-1**, test number: AZ 153010403



**FPN 15-3000-2**, test number: AZ 153020403

**Auxiliary equipment and systems for FPN 10-3000-1, 10-3000-2 and 15-3000-1**

on request, additionally charged:  
 suction inlet 2x A, fourth delivery outlet, connection for a second rapid intervention line, line for turret, installation of a pump proportioner, automatic p.t.o. engagement (ANS), automatic pressure governor (TOURMAT D), automatic water supply system (AWZ), TROKOMAT PLUS shut-off, MAD 30, pumping out unit.

**Auxiliary equipment and systems for FPN 15-3000-2**

on request, additionally charged:  
 suction inlet 2x A, alternatively 1x F, tank suction connection DN 150, up to 6 delivery outlets size B, 1 turret outlet, 2 delivery outlets to the rapid intervention lines, 1 outlet for tank filling line, installation of a pump proportioner, automatic p.t.o. engagement (ANS), automatic pressure governor (TOURMAT D), TROKOMAT PLUS shut-off, MAD 50, pumping out unit.

If an rpm adjustment is necessary (p.t.o.) various integrated pump gearboxes are available (except for FPN 15-3000).